

DATA SHEET - BATERIA ESTACIONÁRIA LIVRE DE MANUTENÇÃO / MAINTENANCE-FREE STATIONARY BATTERY



MODELO / MODEL:

12CE175

TECNOLOGIA / TECHNOLOGY:

Bateria Chumbo-Ácido / Lead Acid Battery

TENSÃO NOMINAL / VOLTAGE:

12 V

DIMENSÕES / DIMENSIONS:

mm (Polegadas) / mm (inches)

COR / COLOR:

Preto e Vermelho / Black and Red

PESO ÚMIDA / WET WEIGHT:

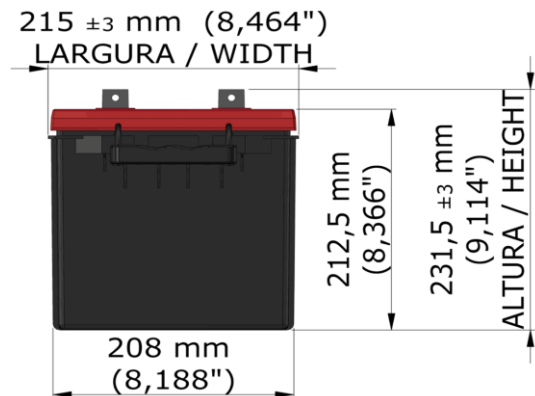
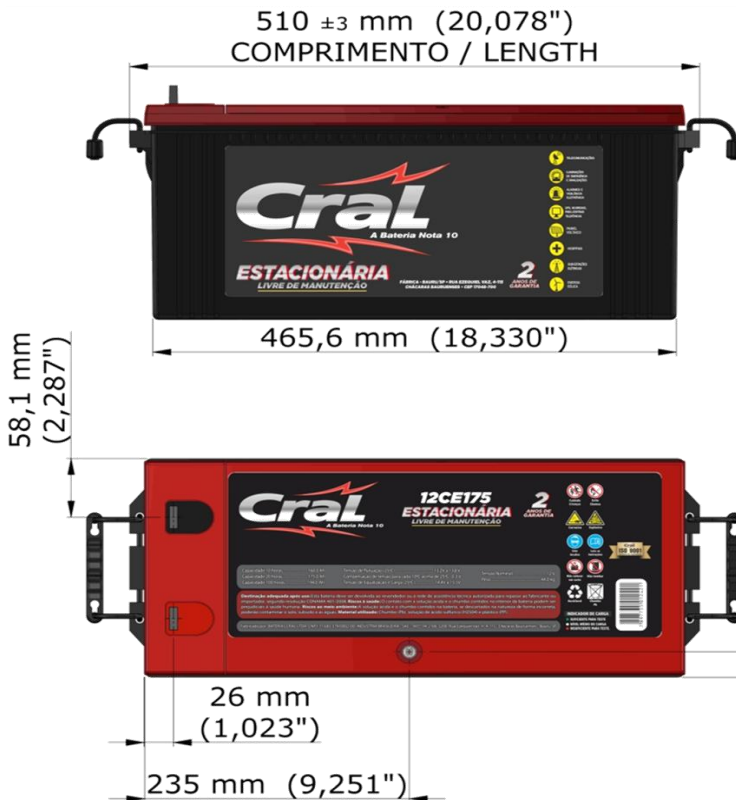
44,00 Kg (97,003 lbs.)

MATERIAL / MATERIAL:

Polipropileno(PP) / Polypropylene (PP)

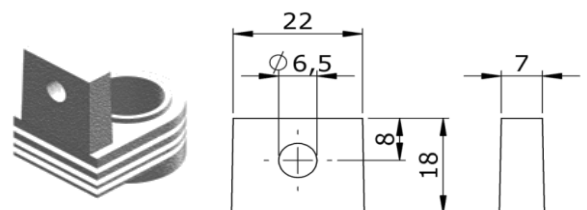
DIMENSÕES (mm) / DIMENSIONS (in)

COMPRIMENTO - LENGTH	LARGURA - WIDTH	ALTURA - HEIGHT
510 mm (20,078")	215 mm (8,464")	231,5 mm (9,114")



TIPO DE TERMINAL / TERMINAL TYPE (mm)

RETANGULAR TIPO 2



DESEMPENHO / PERFORMANCE

C 100 (Ah)	C 20 (Ah)	C 10 (Ah)	C 05 (Ah)	C 03 (Ah)	C 01 (Ah)
194,0	175,0	160,0	136,5	125,2	104,2