

DATA SHEET - BATERIA ESTACIONÁRIA LIVRE DE MANUTENÇÃO / MAINTENANCE-FREE STATIONARY BATTERY



MODELO / MODEL:

12CE45

TECNOLOGIA / TECHNOLOGY:

Bateria Chumbo-Ácido / Lead Acid Battery

TENSÃO NOMINAL / VOLTAGE:

12 V

DIMENSÕES / DIMENSIONS:

mm (Polegadas) / mm (inches)

COR / COLOR:

Preto e Vermelho / Black and Red

PESO ÚMIDA / WET WEIGHT:

11,90 Kg (26,235 lbs.)

MATERIAL / MATERIAL:

Polipropileno(PP) / Polypropylene (PP)

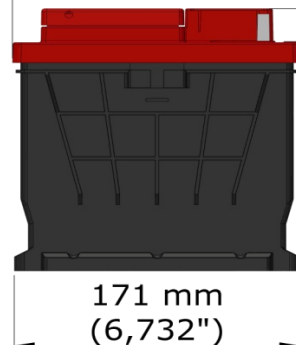
DIMENSÕES (mm) / DIMENSIONS (in)

COMPRIMENTO - LENGTH	LARGURA - WIDTH	ALTURA - HEIGHT
210 mm (8,267")	173 mm (6,811")	175 mm (6,889")

210 ±3 mm (8,267")
COMPRIMENTO / LENGTH



173 ±3 mm (6,811")
LARGURA / WIDTH



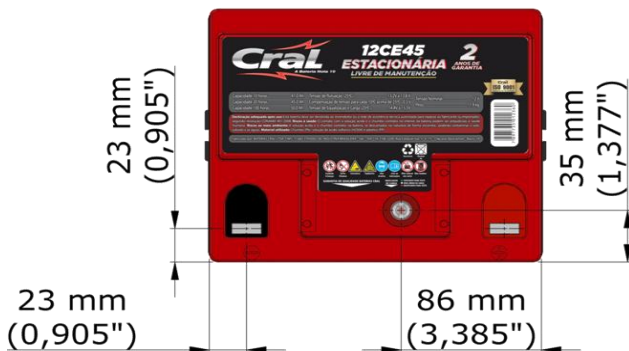
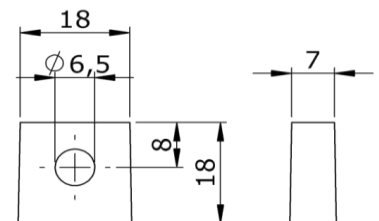
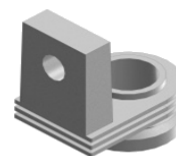
152 mm
(5,984")

175 ±3 mm
(6,889")

ALTURA / HEIGHT

TIPO DE TERMINAL / TERMINAL TYPE (mm)

RETANGULAR TIPO 1



DESEMPENHO / PERFORMANCE

C 100 (Ah)	C 20 (Ah)	C 10 (Ah)	C 05 (Ah)	C 03 (Ah)	C 01 (Ah)
50,0	45,0	41,0	37,5	34,0	26,0