

DATA SHEET - BATERIA ESTACIONÁRIA LIVRE DE MANUTENÇÃO / MAINTENANCE-FREE STATIONARY BATTERY



MODELO / MODEL:

12CE60

TECNOLOGIA / TECHNOLOGY:

Bateria Chumbo-Ácido / Lead Acid Battery

TENSÃO NOMINAL / VOLTAGE:

12 V

DIMENSÕES / DIMENSIONS:

mm (Polegadas) / mm (inches)

COR / COLOR:

Preto e Vermelho / Black and Red

PESO ÚMIDA / WET WEIGHT:

14,10 Kg (31,085 lbs.)

MATERIAL / MATERIAL:

Polipropileno(PP) / Polypropylene (PP)

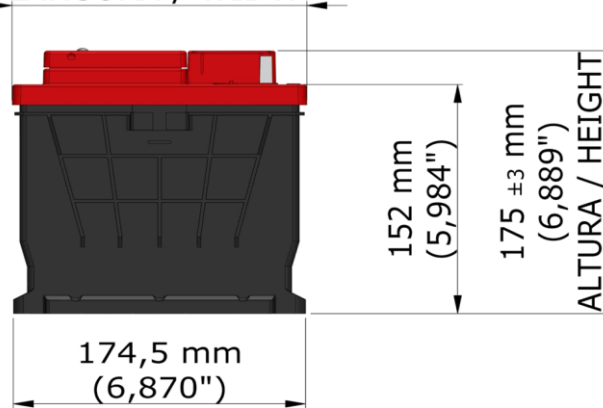
DIMENSÕES (mm) / DIMENSIONS (in)

COMPRIMENTO - LENGTH	LARGURA - WIDTH	ALTURA - HEIGHT
241 mm (9,488")	176 mm (6,929")	175 mm (6,889")

241 ±3 mm (9,488")
COMPRIMENTO / LENGTH

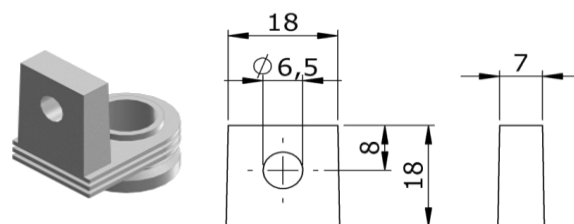


176 ±3 mm (6,929")
LARGURA / WIDTH



TIPO DE TERMINAL / TERMINAL TYPE (mm)

RETANGULAR TIPO 1



DESEMPENHO / PERFORMANCE

C 100 (Ah)	C 20 (Ah)	C 10 (Ah)	C 05 (Ah)	C 03 (Ah)	C 01 (Ah)
68,0	60,0	54,0	48,0	43,5	35,0